




Dosatron Technology

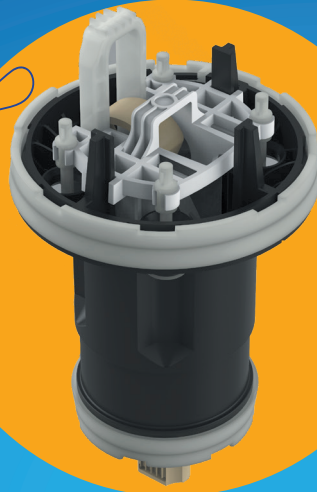
 **DOSATRON**<sup>®</sup>  
Because life is powered by water<sup>®</sup>





 **ANIMAL HEALTH**

**D9 ANIMAL  
HEALTH LINE  
SPECIAL  
Large Poultry Houses**

-  Extended flow range
-  Reinforced reliability and simplified maintenance
-  Optimised chemical resistance

**NEW**



-  Extremely simplified hydraulic motor (35 parts vs. 96 in the D8)
-  No metal parts in the motor. Valve activation system with plastic spring
-  Increased reliability and service life due to the reduction in the number of moving parts
-  Very easy maintenance due to a simplified design.



The **DOSATRON D9 Animal Health** The design of this dosing pump was carried out following Eco-Design Guidelines from the APESA, French Technological Center for Environment and Risk Management.

**NEW**



**D9AL**

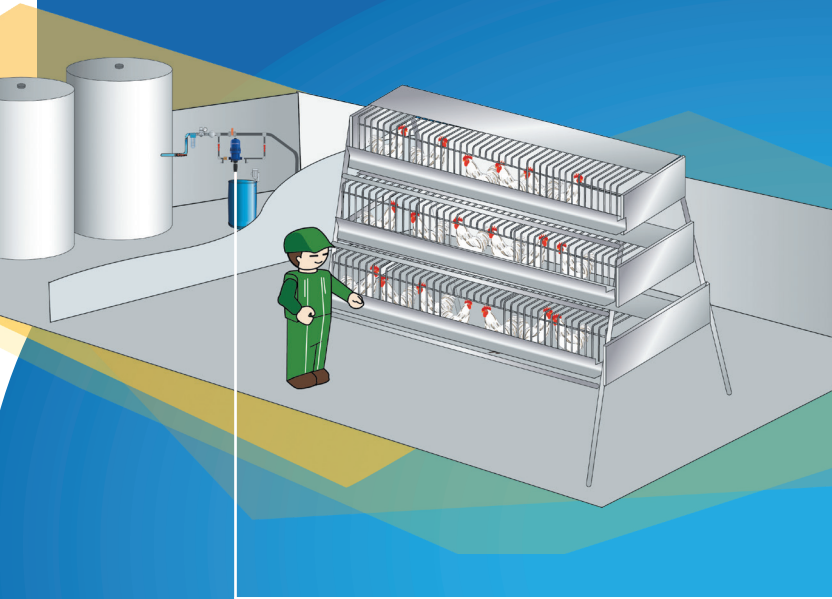
Water flow: **500 l/h min. - 9 m<sup>3</sup>/h max.**



[www.dosatron.com](http://www.dosatron.com)



## ANIMAL HEALTH



### Extended flow range

Compatible with flows of up to 9 m<sup>3</sup>/h to treat 12.5% additional animals.



### Reinforced reliability and simplified maintenance

Streamlined motor design

- 60% fewer parts compared with a D8 dosing pump.

Easily interchangeable motor components:

- tool-free maintenance.

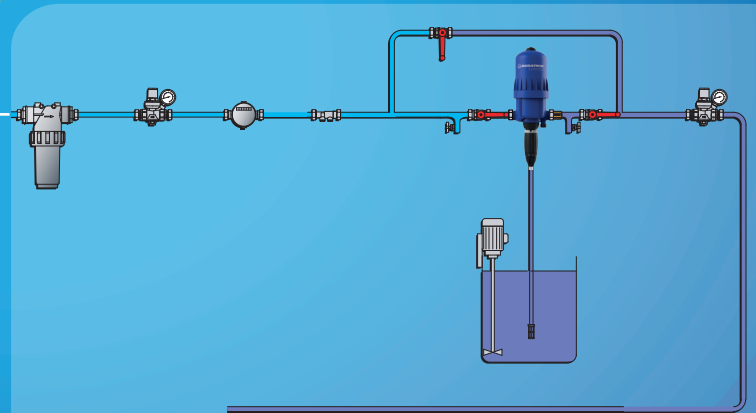


### Optimised chemical resistance

Motor made exclusively of high resistance plastic parts.

Compatible with most acidifying products and disinfectants currently used in farming.

- Medication
- Vaccination
- Acidification
- Sanitising of pipelines
- Hygiene and biosecurity



**D9 Animal Health Line**  
**SPECIAL Large Buildings**

### D9AL2

Dosing: 0.2 - 29%

Water flow: 500 l/h - 9 m<sup>3</sup>/h

Water pressure: 0.3 - 8 bars